

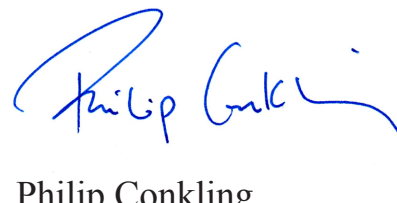
To Our Readers

WHEN we launched the Island Fellows program more than 10 years ago, we had no idea how quickly it would become the Institute's "flagship" initiative, the one most visible to — and valued by — island and coastal communities. Our intent was to respond to the many requests we heard from islanders for help with projects critical to their communities' sustainability; for an extra set of hands and the expertise to tackle difficult, sometimes tedious work. We worried about how successfully our first idealistic college graduate would adjust to a life regulated by ferry schedules and the astronomical tidal clock.

After nearly 70 Island Fellows since that first placement, we continue to be astonished at the degree to which closely-knit island communities embrace their new Fellows, and at how eagerly these young people tackle difficult tasks. On the following pages, you'll learn more about Fellows'

challenges and projects. You'll read about the special moments when they realize that they've been accepted as members of their island communities and have, in a real sense, come home. Most of all, we hope you'll gain a deeper understanding of why these special places — and the people who inhabit them — deserve the best and the brightest Island Fellows we can find.

To all of our generous donors, to Maine's vibrant island and coastal communities, to the advisers who have guided Fellows, and to our Island Fellows past, present and future, our deepest thanks.



Philip Conkling
President, Island Institute

Overview

BETWEEN 1999 AND 2009, 69 Island Fellows have worked in 19 island and coastal towns, including every one of Maine's year-round island communities.

- Almost 70 community-based volunteers have served as Fellows advisers, donating over 16,000 hours — with an estimated value of nearly \$275,000 — to provide on-site direction for Fellows' projects.
- Fifteen of the Island Fellows are still on-island after their placements have ended; of these, eight have married year-round residents and four have families underway.
- The Island Institute's financial support over the years has been over \$2 million matched by almost \$250,000 in local funds and in-kind donations.
- Seventeen of the 45 Fellows (38%) who held bachelor's degrees when they joined the program have pursued graduate degrees and certifications since completing their fellowships.



Jess Stevens (left) and Susan Little, lobster sea-sampling on Chebeague.

“Our world is in good hands. It gives me great hope to know that these young people are our future.”

JOANNE WHITEHEAD, ADVISER, ISLESBORO

Among their major accomplishments:

- Permitting and community outreach for the development and construction of Maine's first island-based wind facility (Katie Chapman);
- Assistance with successful efforts to secure \$30 million in state funding for affordable housing (Mary Terry);
- Development of the first replicable model for an island community healthcare outreach program (Peter Levandoski);
- The creation of a comprehensive curriculum for teachers in Maine's island one-room schoolhouses (Anne Bardaglio and Lana Cannon);
- The successful application for \$150,000 in USDA microenterprise funds for Stonington/Deer Isle (Emma Miran);
- The first Island Indicators report: demographic, education and socio-economic statistics for year-round island communities (Sarah Curran and Jeremy Gabrielson);
- The first Island Affordable-Housing Needs Assessment, Resource Guide and Conference: critical information and resources for island nonprofits (Alyson Mayo);

- The Peaks Information Exchange, an island governance model that led to the first Fellows placement outside of Maine (Fishers Island, NY) and confirmed the Island Fellows program as a nationally replicable model (Nate Gray);
- Community-based sea sampling on Monhegan, Islesboro and Vinalhaven, pioneering the partnership with lobstermen as research platforms (Jess Stevens, Kathleen Reardon, and Nate Gerardi);



Island Fellows pitch in on Trap Day, Monhegan.

An Extra Set of Hands



Hedda Steinhoff collects lobster data off Stonington.

THE ISLAND FELLOWS PROGRAM, first launched in 1999, has become one of the most successful programs developed by the Island Institute, serving communities from Casco Bay to Downeast. These enthusiastic, talented young people are the face of the Institute and they foster the development of additional programs and services.

Island Fellows provide expertise, knowledge, technical skills and the ever-important extra set of hands. In places where community members often wear several different volunteer hats, a full-time Fellow can complete tasks that would otherwise be difficult within the constraints of volunteer time and financial resources.

“I grew up in Maine and I want to stay in Maine. The Peaks Island fellowship provided me with an opportunity to take what I learned in graduate school and apply my skills and knowledge. I couldn’t think of a better place to start. ”

SARAH CURRAN, PEAKS ISLAND FELLOW (2005 – 2007)

FELLOWS ARE MORE than just “workers;” they become members of these closely-knit communities. When the power goes out, they search for candles. They bring pies to potluck suppers; play the fiddle at community events and fundraisers; mentor teens; coach athletic teams and pitch in for a common cause alongside their island neighbors. They share in the community’s joy as well as in its sorrow.



Carly Knight hangs a show at the Chebeague Historical Society.

Island Fellows represent the future of our society, and their presence along Maine’s coast and on its far-flung islands ensures that these special communities will remain vibrant places to live and work.

Fellows often assume leadership roles that would not usually be entrusted to young adults who are just beginning their careers. In 2008-2009 alone, Fellows:

- Played a critical role in successful efforts to garner \$30 million in state bond funds for affordable housing;
- Assisted in the development of what is now the largest coastal wind-power facility in New England;
- Created and implemented health-care programs for an entire island community;
- Developed an island food-buying cooperative as part of a long-range community food system;
- Contracted forestry projects through state and federal grants;

...and much more.

Matching Candidates and Communities



Annie Tselikis (right) at the Stonington Opera House

SINCE 1999, the Island Fellows process has followed a standard procedure for developing projects and recruiting candidates. This process ensures successful recruitment of talented bachelor's- and master's-level graduates for carefully designed projects. Communities apply for Fellows in early spring and placements are completed by mid-summer.

To date, almost 50 percent of Island Fellows either grew up or attended college in Maine, and have wanted to stay in-state for careers or graduate education. Island Fellow placements allow these young adults to use their degrees in hands-on ways, and provide them with opportunities to network and collaborate on-island and on the mainland. Not only have Fellows had opportunities to assume leadership roles that might not have been available to them in larger communities, they have also realized the value of continuing to live, study and work in Maine.

FOR EXAMPLE:

Cherie Galyean, Vinalhaven School Library Fellow (2002-2004) and Downeast Senior Fellow (2004-2005), became the Institute's grants coordinator from 2005 to 2006, and is now the regional coordinator of grants for the Maine Community Foundation, one of the state's premier grantmaking organizations.

Keith Eaton, North Haven Education Fellow (2000- 2002), now teaches American Studies and English at North Haven Community School.

Kathleen Reardon, Islesboro GIS Fellow (2002-2004), completed a graduate degree in marine resources at the University of Maine and has since been hired by the Maine Department of Marine Resources as its lobster sea-sampling coordinator.



Emily Graham (center) with students at North Haven Community School.

“My husband John (a Matinicus fisherman) jokes that, when we got our Fellow, I got a sternman to help me with my long list of things I needed to do to help get the school back on track. It has been amazing how much we’ve accomplished since January...I love my sternman!”

NATALIE AMES, ADVISER, MATINICUS

Island Fellow Profile

A PIONEERING FELLOW, MIKE FELTON served as an Island Fellow from 2000 to 2002 as a teacher and a coach at the Vinalhaven School. In addition to teaching social studies, Mike taught and developed the curriculum for a “College Aspirations” course to help students explore higher-education opportunities. All of the students in Mike’s “College Aspirations” course went off to college five years later.

After completing his fellowship, Mike became the Island Institute’s education officer and continued living on Vinalhaven. In 2004, he was hired as the school leader at Vinalhaven School and married former North Haven Fellow Keely Grumbach. Mike and Keely are the proud parents of a daughter, Anya, born in 2007 and a son, Isaiah, born in 2009. Mike was recently awarded a William H. Gates Public Service Law scholarship to the University of Washington’s School of Law in Seattle, and he and his family have headed West, planning to return to Maine after his law studies have been completed.

Accomplishments as an Island Fellow:

- Taught Social Studies at the Vinalhaven Middle School;
- Developed an after-school youth soccer program;
- Created the “College Aspirations” course that continues to be part of the school curriculum.



Mike, Keely and Anya Felton settled on Vinalhaven before their move to Washington state.

Island Fellow Profile

PETER LEVANDOSKI served as the Institute's first Public Health Fellow on Vinalhaven from 2007 to 2009. He worked as the Public Health Outreach Coordinator with the Island Community Medical Services, a medical clinic on the island.

Accomplishments:

- Helped expand services and initiate new treatment, diagnostic and self-help services for the entire island community;



- Provided needs identification, resource recruitment, administrative oversight, marketing to the community, and program content design;
- Measured the success of programs that focused on such issues as diabetes prevention and awareness, cholesterol screenings, eldercare and healthy habits.

Peter's advice for anyone else considering an Island Fellows placement:

- Don't believe anything you've been told.
- There are no stereotypes to fit the islands.
- Even if there were, each island is unique and each person is unique.
- Your experiences will be different from mine, just as mine have been different from others who have been here before.
- Work hard and stop every once in a while to pinch yourself.

Island Fellow Profile



Sarah Curran (center) with Peaks Island advisers
Don Stein and Lynne Richard.

SARAH CURRAN served as a Fellow on Peaks Island from 2005 to 2007, and received the Willoughby Stuart Fellowship Award in 2006. Sarah worked with the Peaks Island Land Preserve (PILP) on stewardship and community-development projects.

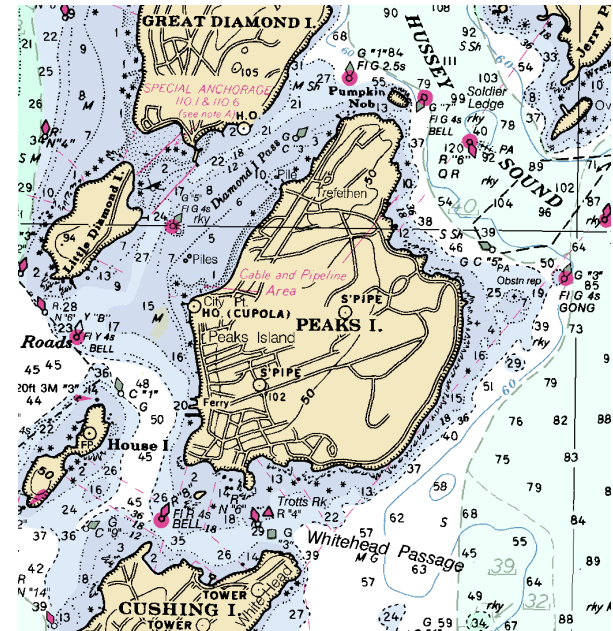
Sarah now works as a community-development consultant for Planning Decisions, Inc. in Hallowell, Maine and lives with her husband, Ryan, in Topsham.

“Sarah is an absolute technical expert; she’s a facilitator of individuals, groups, and community coming together; she’s a negotiator for things she thinks are important; she’s a trainer and educator — and has worked with kids as a mentor. Sarah has also worked hard to create sustainability for the work she has done.”

DON STEIN, ADVISER

Accomplishments:

- Co-authored the Island Indicators report, first published in April 2007 and now in its second edition, that provides an up-to-date snapshot of specific factors that indicate the status of Maine's year-round island communities relative to state and regional statistics;
- Created the Peaks Island Land Preserve (PILP) website, an online database of information on PILP, its land holdings and upcoming activities, as well as a website specifically for the PILP board;
- Completed a GIS-mapping baseline data collection of PILP properties.



Reflection:

“The commitment that so many Peaks islanders have made to each other and to their community is inspiring, especially the time and effort given by my advisers, whose support and enthusiasm for my projects was just outstanding.

As I complete my fellowship, I am very cognizant of how lucky I am to have had this experience. Professionally, I couldn't have asked for a better place to live and work.”

Island Fellow Profile



Siobhan Ryan (second from right) with Swan's Island advisers
(from left) Christal Applin, Candi Joyce,
Donna Weigle, Monica Cease.

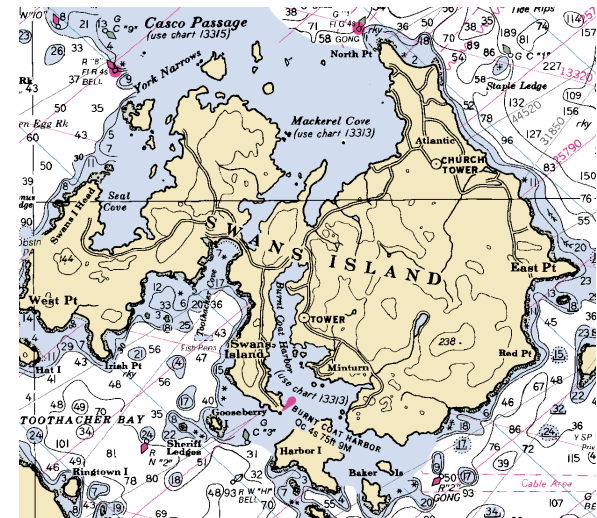
SIOBHAN RYAN served as an Island Fellow with the Swan's Island Educational Society from 2005 to 2007, bringing her library-science expertise to the Swan's Island Library and the Swan's Island Historical Society. During her first year, Siobhan also worked with the Frenchboro Library and the Frenchboro Historical Society.

“When Siobhan showed up, she took my vision and made it work. She got a server, software and grant money to help out in the Swan's Island Library. She finds, uses and shares resources by collaborating with other communities and organizations. Siobhan is an islander at heart. She is my coworker, collaborator, partner in crime, mentor and friend.”

CANDI JOYCE, ADVISER

Accomplishments:

- Provided, through grants and private donations, software to catalog the Swan's Island Library, the Swan's Island School Library and the Frenchboro Library; trained volunteers to assist in linking the three catalogs online to add over 16,000 items;
- Developed a plan and located grant funding for a computer and archival materials to organize, properly store and digitize the Frenchboro Historical Society archives;
- Organized year-round programming at Swan's Island Library, including a popular pizza and movie night, and activities with the local garden club;
- Received an "Emerging Leader" award from the American Library Association in 2007.



Reflection:

“During that first on-island winter, every Monday night, I would venture out in the dark and cold to the library and learn the ins-and-outs of knitting and purling. I really started to know people over slow talks, as the cold settled in.”

Fishers Island: Testing the Model Outside of Maine

IN 2004, THE INSTITUTE RECEIVED AN OPPORTUNITY to further test the Island Fellows model on Fishers Island, a small community a short ferry ride across Long Island Sound from New London, Connecticut and home to about 250 year-round residents. In 2002, a delegation from Fishers Island met with Institute staff to discuss the lack of effective local governance on the island and to request an Island Fellow for assistance in establishing a new structure.



The Fishers Island ferry terminal in New London

Nate Gray, the first Fishers Island Fellow, arrived in January 2004, following a period of reorganization on the island that had brought together almost three dozen of its local organizations.

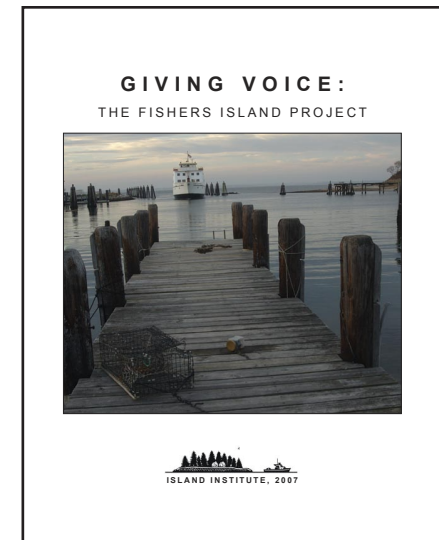
The groups selected a steering committee, began holding regular meetings and decided to disband the island's moribund civic association.

NATE HELPED COORDINATE A NEW ELECTION and form a new governing body; write a mission statement and create a job description for an island administrator. In 2004, Meredith Harr, a professional planner, replaced Nate and helped the community through a difficult legal case involving the local ferry operator; scheduled meetings that included both year-round and seasonal residents and started publishing “The Fog Horn,” a monthly newsletter and calendar.

These days, the Fishers Island Community Board provides “informal governance” that is both inclusive and proactive. Fundraising has begun for a new community center, and “The Fog Horn” (www.fishersisland.net) continues to chronicle the development of the island’s long-term strategic plan, along with community news and events.



Meredith Harr, Fishers Island Fellow



Meredith Harr is now the island administrator on a permanent basis; she married a local resident and juggles full-time employment with her duties as a new mom.

The Fishers Island “experiment” has given us here at the Institute new insights into the Island Fellows program’s tremendous replication potential beyond Maine’s borders. The basic recipe is simple: take one small community with a critically important project, add dedicated local volunteers, and stir in the energetic presence of a talented, young Island Fellow. Wait one to two years and savor the successful results.

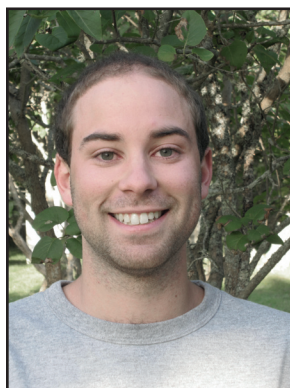
Island Fellowship Endowments

THE ISLAND FELLOWS PROGRAM is a top priority at the Island Institute. We have raised over \$5 million towards our \$7.5 million goal to create a minimum of 10 permanent Island Fellow endowments and funds for island and working-waterfront communities along the coast. Each fellowship requires \$750,000 to ensure support for an Island Fellow in perpetuity. The Island Institute has successfully secured funding from our friends and supporters for the following Island Fellowships:

- The William Bingham Fellowship Endowment for Rural Education
- The Louis W. Cabot Island Fellowship Endowment
- The James and Joanne Cooney Island Fellowship
- The Willoughby Stuart Island Fellowship
- The Swan's Island Fellowship Endowment



Jessica Bellah
Frenchboro



LOUIS W. CABOT FELLOW
Eli Bossin
Chebeague



JAMES AND JOANNE
COONEY FELLOW
Margaret Snell
Isle au Haut



Betsy Walker
North Haven



Eliza Greenman
Cranberry Isles

How You Can Help

The Island Institute has initiated six other Island Fellow community endowments with the following goals:

- Cranberry Isles Fellowship Endowment — raised \$685,000.....with \$65,000 to go.
- Deer Isle-Stonington Endowment — raised \$432,000.....with \$318,000 to go.
- Vinalhaven Island Fellowship Endowment — raised \$387,000.....with \$363,000 to go.
- Islesboro Fellowship Endowment — raised \$251,000.....with \$499,000 to go.
- North Haven Fellowship Endowment — raised \$212,500.....with \$537,500 to go.
- Frenchboro Endowment — raised \$100,000.....with \$650,000 to go.

PLEASE GET IN TOUCH

For more information on how you can make a contribution to the Island Fellows program, please contact Nancy McLeod Carter, Vice-President, at ncarter@islandinstitute.org or 207-594-9209.



WILLOUGHBY STUART
ISLAND FELLOW
Mary Terry
Casco Bay



Emma Miran
Stonington



WILLIAM BINGHAM
FELLOW FOR RURAL
EDUCATION
Lana Cannon
Matinicus



Rebecca Graham
Vinalhaven



Meghan Vigeant
Swan's Island

Fellows - Past and Present

1999

Susan Little
Chebeague Island
Marine Stewardship

Jessica Stevens
Monhegan
Marine Stewardship

2000

Erin Fisher
Deer Isle / Stonington
Marine Stewardship

Megan Powell
Swan's Island
*Environmental Education
and Art*

Keith Eaton
North Haven
*Educational Curriculum
Development*

Mike Felton
Vinalhaven
*Educational Curriculum
Development*

Emily Graham
North Haven
Library Science

Nathan Michaud
Vinalhaven
*Community Development
and Stewardship*

Kathleen Reardon
Islesboro
*Geographic Information
Systems (GIS)*

2001

Helen Chabot
Chebeague Island
*Marine Sciences,
Library and School Services*

Sherry Marcum
Islesboro
Library Science

Allyson Fauver
Cliff Island
*Marine Sciences and
Community Development*

Nate Geraldini
Vinalhaven
Marine Stewardship

Dana Leath
Long Island
*Education and Library
Services*

Dan O'Grady
Friendship
Marine Stewardship

2002

Liv Detrick
Penobscot Bay
Planning and GIS

James Essex
Peaks Island
GIS

Nate Gray
Peaks Island
*Community Development, GIS
and Land Stewardship*

Leah McDonald
Chebeague Island
Community Development

Hedda Steinhoff
Deer Isle / Stonington
Marine-Trades Education

Candyce Dunham
Swan's Island
Music Enrichment

Keely Grumbach
North Haven
Arts Enrichment

Jesse Minor
Islesford
*Marine Sciences,
Working Waterfront Planning*

Kerrie O'Donnell
Vinalhaven
GIS

Shey Veditz
Islesboro
GIS

Cherie Galyean
Vinalhaven
Library Science

2003

Nate Gray
Fisher's Island, NY (*Senior Fellow*)
*Community Development, GIS
and Land Stewardship*

Danielle Hall
Cliff Island
Community Development

Dana Leath
Casco Bay (*Senior Fellow*)
Community Development

Karen Burns
Vinalhaven
Arts Enrichment

Andrew Mountcastle
Friendship
Marine Stewardship

2004

Cherie Galyean
Downeast Communities
(*Senior Fellow*)
Library Science

Nathan Howe
Port Clyde
Marine-Science Education

Kurt Lynch
Vinalhaven
Marine-Trades Education

Dan Miller
Swan's Island / Frenchboro
Library Science

Michele Tranes
Peaks Island
GIS

Stacy Cibula Gambrel
North Haven
GIS

Sean Gambrel
Vinalhaven
GIS

Meredith Harr
Fisher's Island, NY
Community Development

Jeff Killian
Deer Isle / Stonington
Marine-Trades Education

Alyson Mayo
Islesboro
Affordable Housing

Cyrus Moulton
Great Cranberry
Comprehensive Planning

Anna Rubin
Long Island
Library Science and Educational Curriculum Development

2005
Ally Day
Vinalhaven
Technology Education

Jeremy Gabrielson
Machias
Economic Development

Sarah Curran
Peaks Island
Community Development, GIS and Land Stewardship

Carly Knight
Chebeague Island
Historical Preservation

2006
Alden Robinson
Long Island
GIS & Municipal Government

Scott Sell
Frenchboro
Rural Education

David Steckler
North Haven
Place-Based Education

Eric Dyer
Islesford
Comprehensive Planning

Annie Tselikis
Deer Isle / Stonington
Economic Development and Digital Media

Ryan Albright
Islesboro
Comprehensive Planning

Anne Bardaglio
Matinicus
Educational Curriculum Development

2007
Brooke Brewer
Peaks Island, Casco Bay
Affordable Housing Economic Development

Katie Chapman
Swan's Island
Alternative Energy, Healthcare

Pete Levandoski
Vinalhaven
Healthcare Outreach

Morgan Witham
Isle au Haut
Educational Curriculum Development, Library Sciences

Thea Youngs
Chebeague Island
GIS

2008
Mary Terry
Casco Bay
Affordable Housing

Lana Cannon
Matinicus
School/Historical Society

Betsy Walker
North Haven
Historical Society

Emma Miran
Stonington
Planning & Economic Development

Emma Lishness
Islesboro
Community Center

Eliza Greenman
Cranberry Isles
Sustainability

2009
Eli Bossin
Chebeague
Municipal/Historical Society

Margaret Snell
Isle au Haut
Comprehensive Planning

Jessica Bella
Frenchboro
Town Planning

Meghan Vigeant
Swan's Island
Historical Preservation

Rebecca Graham
Vinalhaven
Nonprofit Management



“I worked for three years for those kids to give them a better understanding of the larger world and a stronger sense of pride in who they are and what they can offer the world.”

EMILY GRAHAM, NORTH HAVEN ISLAND FELLOW