

The Map to MAP

Start Here



Junior Year

Individualized Support
on scholarship and college applications



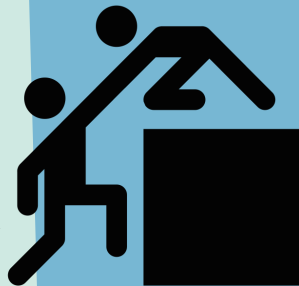
High School
Graduation

Apply to
MAP

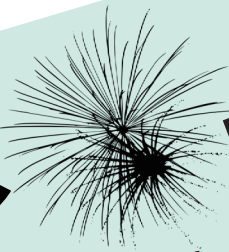


Monthly Webinars

Scholarship Search | College Essay Writing
Financial Aid | Learning Styles
Time Management
Financial Literacy



Peer
Mentoring



MAP Kickoff
Celebration

Senior Year

Scholarship
Support



Summer
Leadership
Intensive



College
Graduation!

MAP Resources Include:

Summer Leadership Intensive: During the summer between their junior and senior years, MAP Scholars will be invited to participate in a multi-day leadership training that will benefit all students, regardless of their future plans.

Monthly Webinars: Island Institute staff will host monthly webinars on topics such as: Time Management, College Applications, Financial Aid, Scholarship Search, College Expectations, and Financial Literacy.

Online Resource Toolbox: There's so much information out there about colleges, scholarships, and navigating transitions that it can be hard to know where to begin. We've pulled together a list of helpful resources, - organized by subject matter - to help you connect with the information you need.

Individualized Support: Island Institute staff will be available to provide individualized support to MAP Scholars and their families.

Peer Mentor: Graduating high school seniors will be paired with island student mentors currently enrolled in college. Mentors will provide support to their mentees through weekly check-ins and events during the year.

Scholarship: MAP Scholars who successfully meet program requirements will receive a \$2,000 scholarship, at \$500/year for up to four years. Scholarship recipients must be island residents attending an accredited post-secondary (2-year, 4-year, vocational, or technical) institution and be fully matriculated in a full-time program.

Eligibility

To apply for MAP, students must be:

- A resident of or attending high school on one of Maine's 15 year-round, un-bridged islands
- Currently enrolled in or have graduated from the highest grade available at your island school
- A current high school junior

Extenuating circumstances regarding age, island education, and island residency will be considered on a case-by-case basis.

Program Requirements

MAP Scholars are highly encouraged to actively participate in all aspects of MAP programming. In order to meet program requirements and be eligible for the scholarship funds, MAP Scholars are required to complete the following:

- Participate in induction training
- Attend one in-person training
- Participate in 4 of the 8 monthly webinars, including providing written commentary

Please note that students enrolled in an island school magnet program who are not island residents may participate in MAP programming, but are ineligible for the scholarship award.

To apply for MAP, contact:

Caroline Moore
cmoore@islandinstitute.org
(207) 594-9209 x 159

MAP

Mentoring, Access, and Persistence

A college access program for high school juniors and beyond



What is MAP?

MAP is designed for students from or attending school on Maine's 15 year-round, un-bridged islands. Our goal is to support a cohort of students throughout the college application and transition process by providing leadership training, monthly webinars, individualized support, peer mentoring, and scholarship support.

